



WOLTMAN 90 PR

WOLTMAN PILING & DRILLING RIGS

Multipurpose
CAT engine (>750 HP)

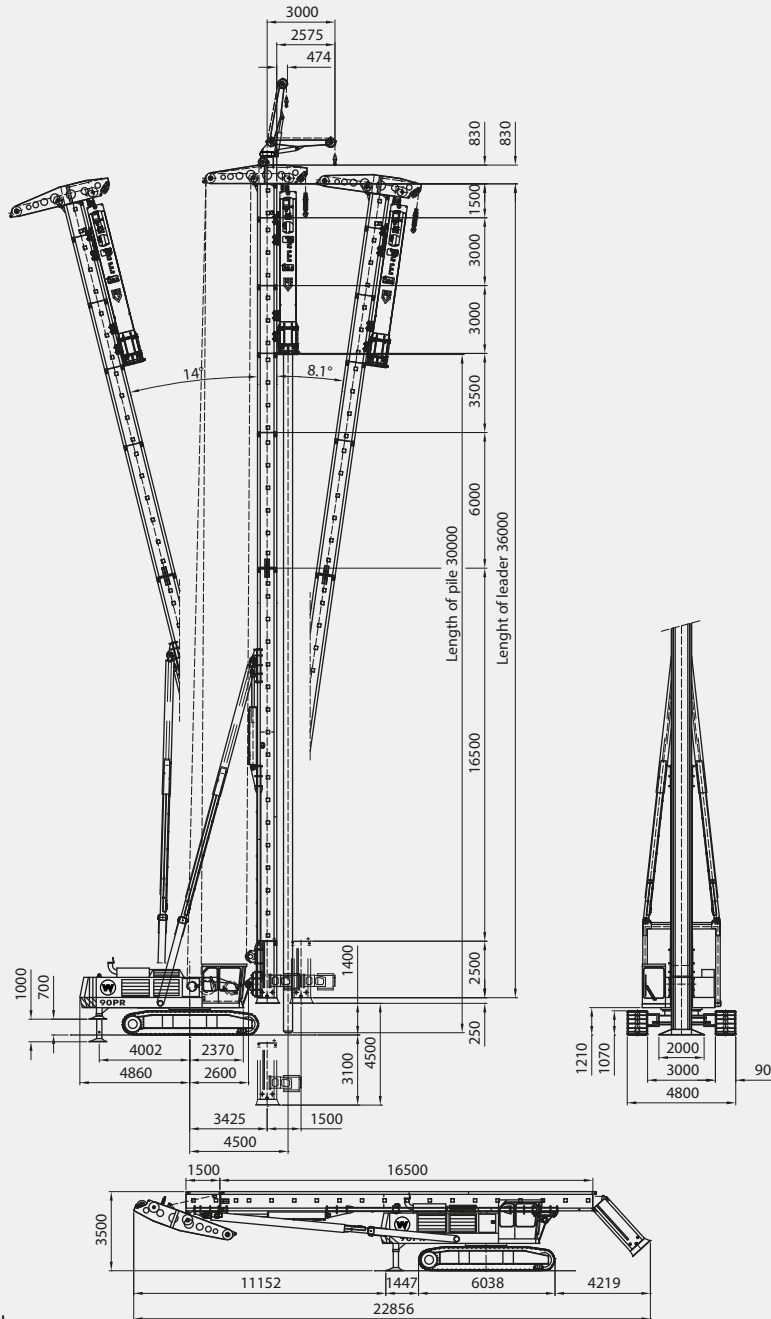
DIESEKO GROUP

WOLTMAN
PILING & DRILLING RIGS

WOLTMAN 90 PR

Woltman is continuously improving their range of equipment. Developments in relation to emission standards and fuel efficiency might result in different specifications. No rights can be attached to the dimensions and specifications mentioned on this leaflet because they might have changed without further notification. All data is subject printing and conversion errors.

TECHNICAL SPECIFICATIONS



All dimensions are in millimeters

Operational specifications

Recommended hammer size	PVE	9NL/12NL		
Max. pile + hammer weight*	ton	30	lbs	66,139
Leader length std. (max.)	mtr	30 (36)	ft	98.4 (118.1)
Max. pile length (max.)	mtr	24 (30)	ft	78.7 (98.4)
Hammer winch	ton	25 (12,5x2)	lbs	55,116
Pile winch	ton	25 (12,5x2)	lbs	55,116
Operational weight incl. 12NL	ton	108	lbs	238,099
Max. oil flow	l/min	520	g/min	137
Max. pressure	bar	320	psi	4,641

Weights

Transport weight excl. hammer	ton	90	lbs	198,416
Transport weight w/o counterweight	ton	75	lbs	165,347
Tr. weight w/o tracks & counterweight	ton	57	lbs	125,663
Weight per track drive	ton	9	lbs	19,842
Total counterweight	ton	15	lbs	33,069

Rig specifications

Engine	Caterpillar C.13		
Engine output	kW	350	HP 475
Hydraulics	Bosch Rexroth		
Hydraulic system	Openloop		

* subject to capacity charts

Woltman Piling and Drilling Rigs B.V. Ambachtsweg 16, 3381 LN Giessenburg, the Netherlands
T: +31 (0)184 - 652 044 W: www.woltmanrigs.com E: info@woltmanrigs.com

Member of

DIESEKO GROUP